

Product Data sheet : Hall Effect Current Sensor - HE2K0T01-CB10

Date : 02.06.2014

Rev : 02

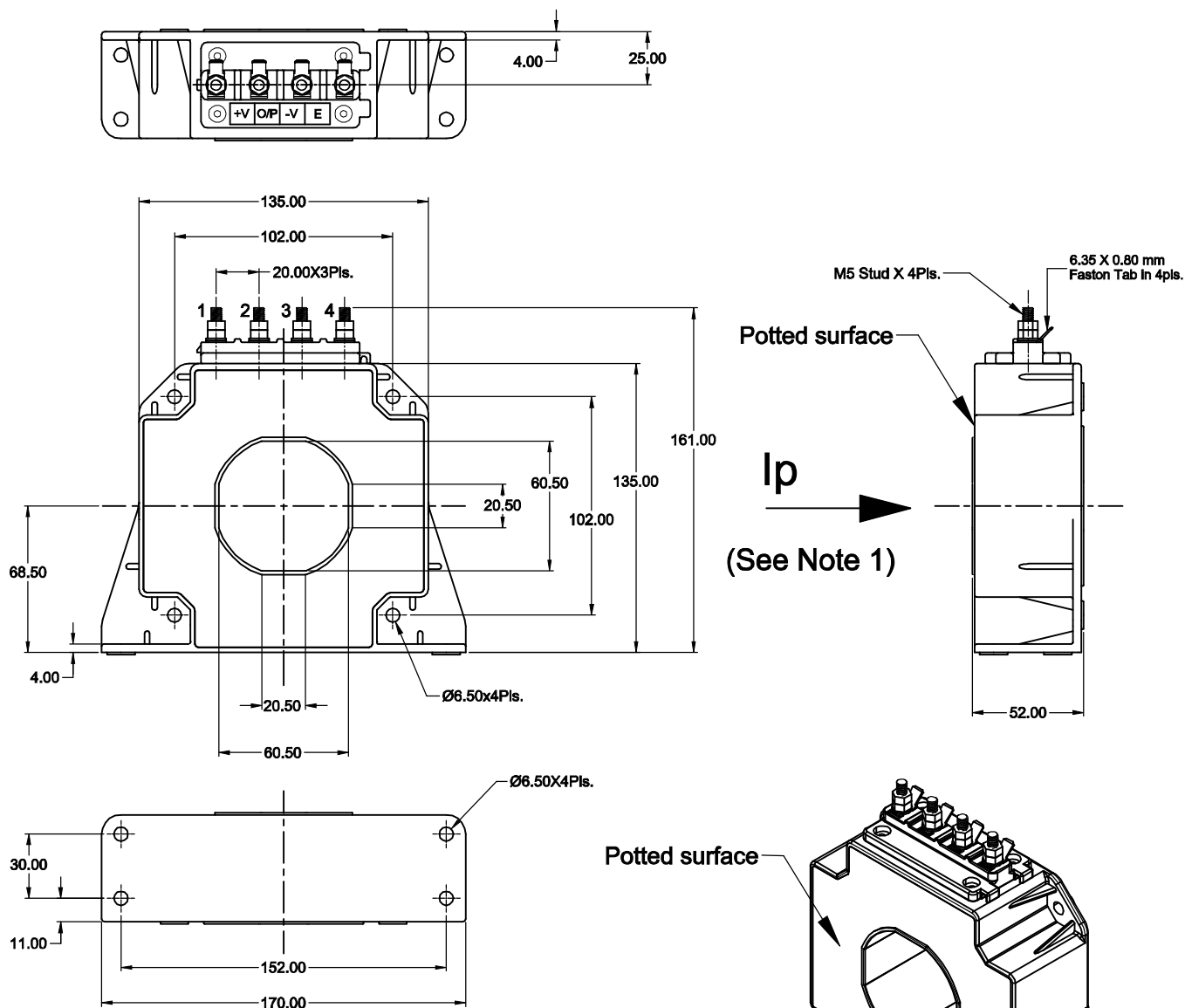
Page 1 of 2

Customer: ---

Customer's part No.: ---

(Pb) RoHS Compliant

● MECHANICAL DIMENSIONS



- Stud 1 : +Vcc (+V)
- Stud 2 : Output (O/P)
- Stud 3 : -Vee (-V)
- Stud 4 : Earth (E)

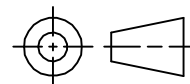
● APPLICATION :

Used for measurement of electric current, AC, DC, Pulsed in electrical & electronic equipment.

● FEATURES :

- Closed loop current sensor.
- Flange mounting type.
- Current output.

GENERAL TOL.
±0.5 mm



ALL DIMENSIONS
ARE IN 'mm'

SCALE -NTS

