

Representative image only

Features

- Isolation

Advantage

- -----

Applications

- Relay application

Application domain

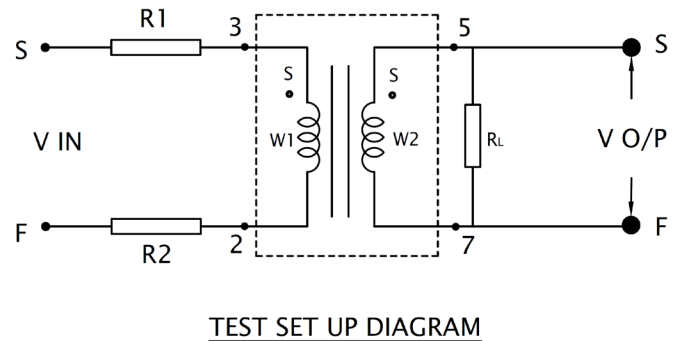
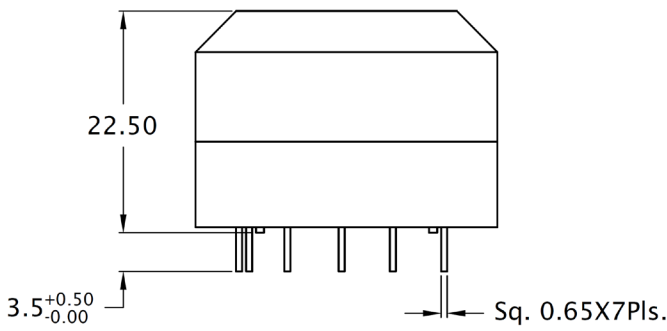
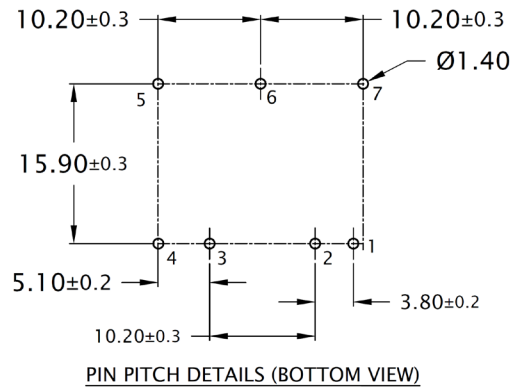
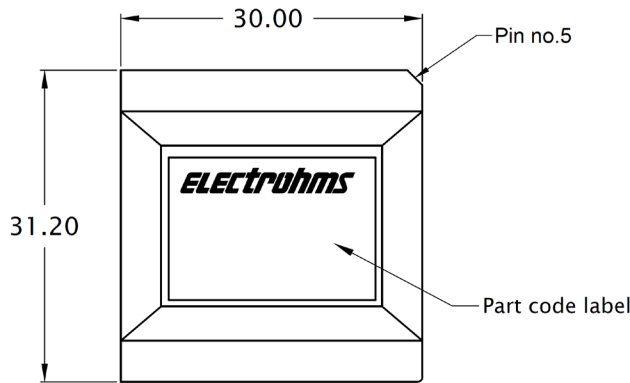
- Commercial
- Industrial

Specifications @ 25°C

Parameters	Symbol	Value	Units
Voltage input throw R_{s1} and R_{s2} resistance 22K	V_i	110	V
Voltage output	V_o	4.3	V
Operating frequency	f	50/60	Hz
Turns ratio	N	1:1	---
Primary winding resistance	R_p	2.1K - 3.0K	Ω
Secondary winding resistance	R_s	2.1K - 3.0K	Ω
Recommended secondary burden resistance	R_b	2K	Ω
Inductance @ 0.3Vrms, 100Hz, parallel mode	L	100 - 350	H
Operating temperature range	T_{opr}	-40 to +85	°C
Storage temperature range	T_{stg}	-40 to +85	°C
Dielectric strength between primary and secondary terminals, @ 50Hz, 60 seconds	V_d	4.0	kVrms
Mass	m	41	g

The transformer error values are guaranteed with recommended secondary burden resistance values. Contact ELECTROHMS design group for use of burden other than recommended secondary burden resistance.

Mechanical dimensions



Tolerance unless otherwise specified

0.5 up to 3 in mm	>3 up to 6 in mm	>6 up to 30 in mm	>30 up to 120 in mm	>120 up to 400 in mm	>400 up to 1000 in mm	ALL DIMENSIONS ARE IN 'mm'	
± 0.20	± 0.30	± 0.50	± 0.80	± 1.20	± 2.0	SCALE -NTS	

Termination Details	
S	Start
F	Finish

Notes:

- The start & finish of the transformer and winding schematic will be as shown in the figure,

Safety



- When operating the transformer will carry hazardous voltage.

General information

Electrohms reserves the rights to make modifications on products for improvements without prior notice.